



# Registering for SREC-II Payments in New Jersey



**SOLAR  
INCENTIVES NJ**



**InClima**

January 25, 2021

Presented by InClima, Inc., SREC-II & TREC Administrator for Electric Distribution Companies



# Agenda

- Program Overview
- Steps to Register for Payments
- Payment Process
- Solar Incentives NJ Portal
- Payment Structure
- GATS Management
- Payment Timeline Review & FAQs



# Program Overview

- On August 27, 2021, the NJBPU opened the Successor Solar Incentive (SuSI) Program as the long-term solar solution and closed the Transition Incentive (TI) Program to new applicants.
  - SuSI Sub-Programs: Administratively Determined Incentive (ADI) Program and the Competitive Solar Incentive (CSI) Program.
- The Solar Incentives NJ platform allows homeowners and aggregators to obtain either Transition Renewable Energy Certificate (TREC) or Successor Solar Incentive (SuSI) SREC-II payments from the electric utilities in New Jersey for generation reported to PJM-GATS.
  - The portal currently only supports the ADI program because the CSI program is still under development with the NJCEP.
- To begin receiving payments, the New Jersey Clean Energy Program (NJCEP) must provide the solar facility with an eligible State Certification Number:
  - TI Program Online Application can be found at <https://njsolartransition.programprocessing.com/content/Home>
  - SuSI ADI Program Online Application can be found at <https://njadi.programprocessing.com/>
  - We encourage everyone to review the FAQs on the NJCEP Solar Transition website as well at <https://njcleanenergy.com/renewable-energy/program-updates-and-background-information/solar-transition-frequently-asked-questions>
- 1 REC = 1 TREC or SREC-II = 1 MWh (or 1,000 kWh)

# Steps to Register for Payments



<https://solarincentivesnj.com/successor/>

**Step 1:** Create an account with the [PJM-EIS Generation Attribute Tracking System \(GATS\)](#)

- Go to <https://www.pjm-eis.com/> and navigate to the GATS Sign In section in top left and click “Not a Member? Register Here”. Instructions on creating a GATS account can be found here: [GATS Solution Aid – New Account Creation](#). If accessing on mobile, click the padlock icon to be presented with a GATS Sign In page.

**Step 2:** Register your solar facility as a generator with GATS

- Log-in to [PJM GATS](#) and under Assets select “Register Solar Photovoltaic Generator”. Instructions on registering a solar facility can be found here: [GATS Solution Aid – Registering a Generator](#).

Participants must provide the system’s array details and State Certification Number provided by email on the facility’s NJCEP approval letter. Please be sure to also select the “*Check this box to automatically create standing order*” option when submitting your generator application. If you do not have the required information, please contact your installer directly. Please be advised it may take 3-4 business days to be approved. Once approved, a GATS Unit ID will be issued.

For questions regarding Step 1 & Step 2, please contact the GATS admin staff directly by phone at 1-877-750-4287 or via email at [gatsadmin@pjm-eis.com](mailto:gatsadmin@pjm-eis.com).

**Step 3:** Register a payment account

- Click “Create Account” on this page
- Create an account with appropriate contact info and click the activation link sent to you by email.
- Log-in and click “Register a Payment Account” to enter payment information and system details including the Unit ID assigned by GATS (typically starting with “NON”) and the NJ State Certification Number assigned by NJCEP.

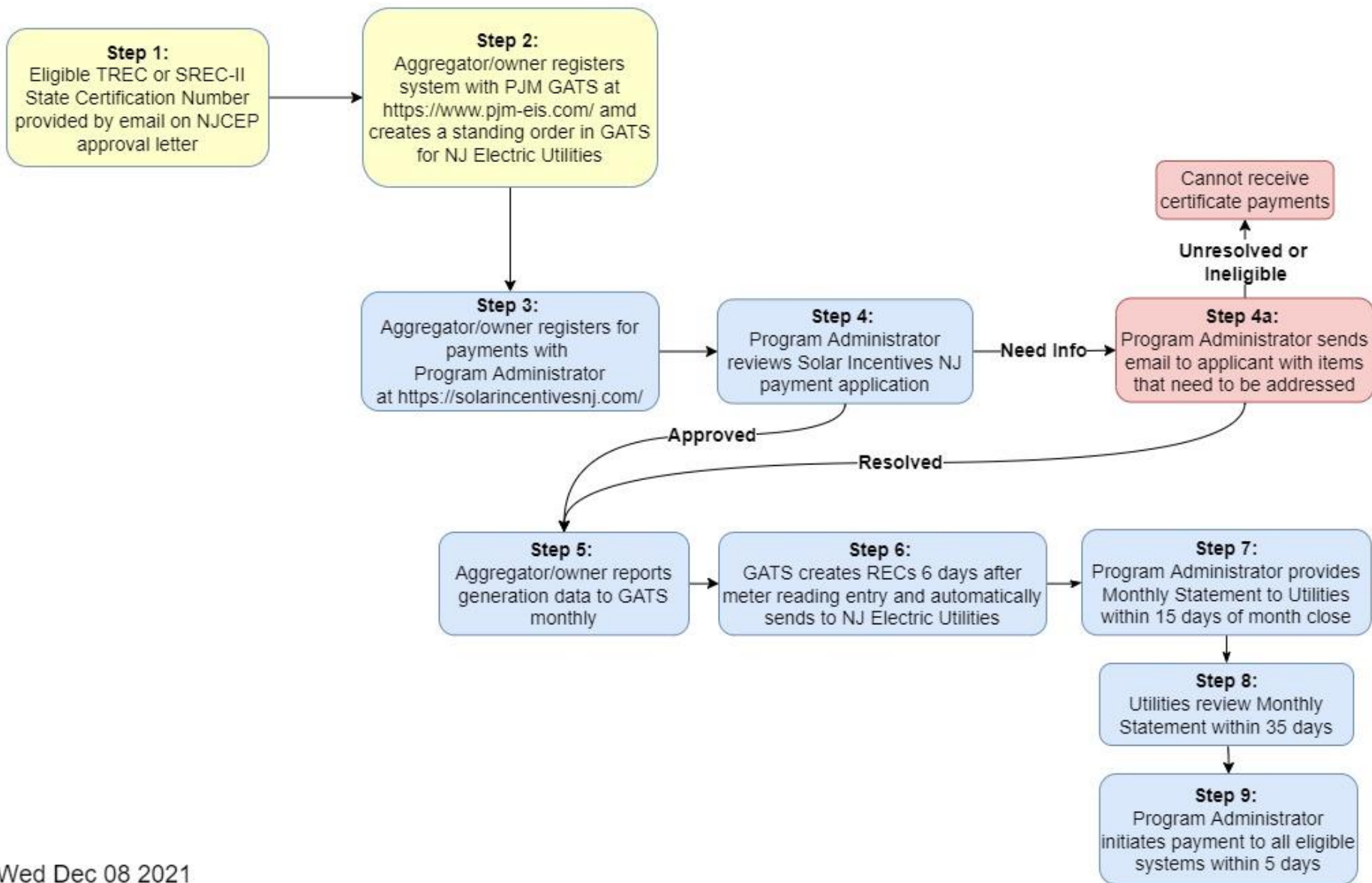
If your solar facility was registered as a generator with GATS before September 23, 2021, you will need to manually create an Irrevocable Standing Order in GATS for “**Solar Incentives NJ Program**”.

To do so, log-in to [PJM GATS](#) and under Certificates select “Create Standing Orders”. Instructions on completing a standing order can be found here: [GATS Solution Aid – Creating Standing Orders](#). The Account Holder the standing order should be sent to is “**Solar Incentives NJ Program**”. Type “**Incentives**” in the search box and click Find for the program account to display. When creating the standing order, please be sure to leave the “To” field as “(No end date)” and check the “Irrevocable” box before clicking the Save button.

Participants can find more information about this process under the program’s [FAQ](#) and [Resources](#) pages.



System Registration & Program Administrator Payment Process



# NJCEP Final Approval Letter



[DATE]

ADI Registration Number NJADRE154#####

**NOTICE:** New Jersey SREC-II Certification Number [NJ-#####-SUN-I-XXX-SREC-II]

Market Segment: [XXXXXXXXXXXXX]

Premise Contact: First and Last  
Premise Company, if applicable  
Premise  
Address  
City, State, Zip

Dear Primary Contact:

Congratulations on completing your new solar electric system through the Administratively Determined Incentive (ADI) Program in New Jersey's Successor Solar Incentive Program.

As you may already know, your new system is eligible to earn NJ Solar Renewable Energy Certificates (SREC-IIs) which contributes value as your system produces electricity.

Please read this letter carefully, and if you have retained the rights to your SREC-IIs and wish to sell them, you should establish your SREC-II account as soon as possible.

If you have not assigned the rights to the SREC-IIs from your system to a third-party in your installation contract or other transaction, you are eligible to establish a SREC-II account in the PJM-EIS Generation Attribute Tracking System (GATS) and you will be issued one SREC-II for every 1,000 kilowatt-hours of energy produced by your system. SREC-IIs represent the renewable attributes from your solar facility.

You first need to determine whether you will be managing the SREC-II account yourself or whether someone else will be managing your SREC-II account for you. Typically, if you have pre-sold or otherwise granted ownership of your SREC-IIs to another party, that party will manage the SREC-II account. Once you are sure who is responsible for managing your system's SREC-II account, you will be required to take one of the two paths outlined below:

## If An Aggregator Will Manage the SREC-II Account for your Solar Facility

- Contact your representative:** Your representative will submit paperwork necessary for registering your solar system in GATS but will need your written permission to do so.
- Grant consent to manage the SREC-IIs on your behalf:** The company who manages the SREC-II account will likely provide you with a "GATS Schedule A Form" (Generator Owner's Consent) which you will need to sign.
- You will need to include the "NJ Certification Number" shown at the top of this letter in the table on GATS Schedule A under "PJM MSET ID or EIA plant Code and Generator Identifier, (as applicable)". Return the signed GATS Schedule A Form directly to your representative.
- Your representative will let you know if there is any additional information needed.

## SREC-IIs Owned and Managed by You

- Register online for a New Account at GATS:** Go to PJM-EIS website and log in at [www.pjm-eis.com](http://www.pjm-eis.com) and Select the "GATS Sign in Box" at the top of the page. Click "Not A Member? Register Here" and complete the application for your GATS Account.
- Complete the PJM-EIS New Account Application Online:** Complete the New Account Application Page and click the "Submit for Approval" button at the bottom of the page.
- Accept the GATS Terms of Use Online.** You will be asked to accept the "GATS Terms of Use" online. This will log the date and time you created your account. Your account will then be reviewed by the GATS Administrator and approved as soon as possible.
- Register your System in your GATS Account:** Once your account is approved, you will still need to register the system within your GATS account. Log into your account and under Assets click "Register Solar Photovoltaic Generator". Complete the required fields and enter "Solar Photovoltaic" as your fuel type. Use the **NJ SREC-II Certification Number** shown in bold at the top of this letter to register your system. Please be sure to also select the "Check this box to automatically create standing order" option when submitting your generator application. You can now "Submit" for approval. Once submitted, PJM-EIS will review and approve your system.
- Once your generator is approved by GATS,** you may register for payments with the SREC-II Administrator at <https://solarincentivesnj.com/>. Participants can find all [Steps to Register for Payments](#) and more information about this process under the program's [FAQ](#) and [Resources](#) pages.
- Begin Submitting Meter Readings to Earn SREC-IIs:** You may now begin recording monthly generation to GATS at <https://www.pjm-eis.com/>. Your SREC-IIs will be automatically transferred to the Solar Incentive NJ Program for payment once the Standing Order is approved.

**Note:** The SREC-II Administrator has been contracted by the state's Electric Distribution Companies to procure all eligible SREC-IIs



The Solar Incentives NJ platform allows homeowners and aggregators to obtain either Transition Renewable Energy Certificate (TREC) or Successor Solar Incentive Program (SuSI) payments from the electric utilities in New Jersey for generation reported to PJM-GATS.

[CREATE ACCOUNT](#)

[LOGIN](#)



SREC-II certificates are now created in New Jersey to provide incentives for all solar systems certified under the [Successor Solar Incentive \(SuSI\) Administratively Determined Incentive \(ADI\) Program](#). To learn more about this Program, please click the button below

[SUSI NEW JERSEY](#)



Transition Renewable Energy Certificates (TRECs) are created in New Jersey to provide incentives for all solar systems certified under the [Transition Incentive \(TI\) Program](#). To learn more about this Program, please click the button below.

[TRECS NEW JERSEY](#)



The Solar Incentives NJ platform allows homeowners and aggregators to obtain either Transition Renewable Energy Certificate (TREC) or Successor Solar Incentive Program (SuSI) payments from the electric utilities in New Jersey for generation reported to PJM-GATS.

**CREATE ACCOUNT**

LOGIN



SREC-II certificates are now created in New Jersey to provide incentives for all solar systems certified under the [Successor Solar Incentive \(SuSI\) Administratively Determined Incentive \(ADI\) Program](#). To learn more about this Program, please click the button below

**SUSI NEW JERSEY**



Transition Renewable Energy Certificates (TRECs) are created in New Jersey to provide incentives for all solar systems certified under the [Transition Incentive \(TI\) Program](#). To learn more about this Program, please click the button below.

**TRECS NEW JERSEY**

# Application Portal



## Creating an Account

INFORMATION PROJECTS

### User Registration

<b>Your Login</b> Email <small>REQUIRED</small> <input type="text"/> Password <small>REQUIRED</small> <input type="password"/> Confirm Password <small>REQUIRED</small> <input type="password"/>	<b>Your Information</b> First Name <small>REQUIRED</small> <input type="text"/> Last Name <small>REQUIRED</small> <input type="text"/>	<b>Your Address</b> Company Name <input type="text"/> Street <small>REQUIRED</small> <input type="text"/> Apartment or Suite <input type="text"/> City <small>REQUIRED</small> <input type="text"/> State <small>REQUIRED</small> <small>-- Select One --</small> <input type="text"/> Zip Code <small>REQUIRED</small> <input type="text"/> Phone <small>REQUIRED</small> <input type="text"/> <small>Enter 123-123-1234 with no extensions allowed</small>	<b>Create account!</b> <input type="button" value="Create Account"/> <input type="button" value="Cancel"/>
--	--	---	---

INFORMATION PROJECTS

### Account Log in

Email <input type="text" value="admin@tecsnj.com"/> Password <input type="password" value="*****"/> <input type="button" value="Log in"/> <input type="button" value="Forgot password &gt;"/>	<b>Don't have an account?</b> Create an account to apply to be an Approved Vendor
---	--

# Application Portal



## Step 1 Creating a Project

SOLAR INCENTIVES NJ INFORMATION PROJECTS PAYMENTS AGGREGATORS PROJECT ADMIN

### Project Dashboard

Register a Payment Account

You have no project applications at this time.

### Create your Project

Step 1 Step 2 Step 3 Step 4 Step 5

**Project Name** REQUIRED  
Solar Incentive NJ  
A personalized name for your project, for example "My Roof"

**Project Location**

Use my contact information >

**Name of Property Owner** REQUIRED

Company Name (if applicable)

**Street** REQUIRED

Apartment or Suite

**City** REQUIRED

**State** REQUIRED  
-- Select One --

**Zip Code** REQUIRED

Save and Continue Exit

**Step 1**  
**Project Location**  
Please provide the physical address at which the solar facility is installed

**Contact Us**

Tel	(877) 754-3149
Email	admin@solarincentivesnj.com

- Each registration will be assigned a unique ID so that all parties can reference
- Project Name
- Project Location

# Application Portal



## Step 2 System Owner Information

- Owner Information
- If same as previous info provided, users can populate information using buttons:
  - Use my Contact Information
  - Use my Property Location Information
- What is the role of the entity filling out the application?
  - Owner vs. Aggregator

Project ~ Solar Incentive NJ

Step 1 **Step 2** Step 3 Step 4 Step 5

### System Owner Information

[Use my Contact Information >](#) [Use my Property Location Information >](#)

**Name of Owner** REQUIRED  
Johnny Bananas

**Company Name**  
[Empty]

**Street** REQUIRED  
123 Main St

**Apartment or Suite**  
[Empty]

**City** REQUIRED  
Wildwood

**State** REQUIRED  
New Jersey

**Zip Code** REQUIRED  
08077

**Phone** REQUIRED  
877-754-3149  
Enter 123-123-1234 with no extensions allowed

**Email** REQUIRED  
admin@solarincentivesnj.com

**Has the owner of this facility changed since it received a certification approval letter from NJCEP?** REQUIRED  
no

**What is the role of the entity filling out the application?** REQUIRED  
Owner

[Save and Continue](#) [Exit](#)

### Step 2

**System Owner**  
Please provide the owner information for the eligible solar facility.

**Change of Ownership**  
If the System Owner entered on this application does not match the information with the New Jersey Clean Energy Program (NJCEP), please answer Yes to the question "Has the owner of this facility changed since it received a certification approval letter from NJCEP?". You will then be required to provide a signed GATS Change in Ownership form in Step 5.

**Contact Us**

Tel	(877) 754-3149
Email	admin@solarincentivesnj.com

# Application Portal



## Step 2 Aggregator Information

What is the role of the entity filling out the application? REQUIRED

Aggregator

- Who would be considered an “Aggregator”?
  - PJM GATS defines an aggregator as an entity that either owns multiple renewable energy sources or has an agreement with the owners to manage these sources on their behalf.
  - Aggregators need to have a signed [Schedule A](#) agreement authorizing them with rights to register the system.
  - Aggregators will be required to upload this in Step 5.

Aggregator Information

[Use my Contact Information >](#)

Name of Aggregator REQUIRED

Company Name

Street REQUIRED

Apartment or Suite

City REQUIRED

State REQUIRED

-- Select One --

Zip Code REQUIRED

Phone REQUIRED

Enter 123-123-1234 with no extensions allowed

Email REQUIRED

[Save and Continue](#)

[Exit](#)

# Application Portal



## Step 3 Bank Information

- Payments will be received via direct deposit
  - The portal is protected by a 128 bit SSL security certificate and all account transactions are conducted using an SSL secured connection with data stored in an encrypted database.
- Be sure to enter your information carefully for timely payments
- Routing Number: 9 digits

Project ~ Solar Incentive NJ

Step 1 Step 2 **Step 3** Step 4 Step 5

### Bank Details

Bank Name REQUIRED

Account Holder Name REQUIRED

Account Type REQUIRED  
-- Specify One --

Account Number REQUIRED

Routing Number REQUIRED

Do you have access to checks from this account? REQUIRED  
-- Specify One --

### Step 3

#### Contact Us

Tel	(877) 754-3149
Email	admin@solarincentivesnj.com

NAME 0123  
ADDRESS  
CITY, STATE ZIP 01-2345/6789

DATE \_\_\_\_\_

PAY TO THE ORDER OF \_\_\_\_\_ \$

\_\_\_\_\_ DOLLARS

BANK NAME  
ADDRESS  
CITY, STATE ZIP

FOR \_\_\_\_\_

Ⓜ 0 1 2 3 4 5 6 7 8 Ⓜ 0 1 2 3 4 5 6 7 8 9 0 1 2 3 Ⓜ 0 1 2 3

**Bank Routing Number**      **Bank Account Number**      **Check Number**

# Application Portal



## Step 4 Interconnection Details

- Interconnecting Utility
  - Atlantic City Electric (ACE)
  - Jersey Central Power & Light
  - PSE&G
  - Rockland Electric
  - Municipal/Electric Coop
- PJM GATS Unit ID
  - NON or MSET number
- NJ Certification Number
  - Must end with “-TREC” or “-SREC-II” in order to participate

Project ~ Solar Incentive NJ

Step 1 Step 2 Step 3 **Step 4** Step 5

### Interconnection Details

**Interconnecting Utility** REQUIRED  
-- Specify One --

**PJM GATS Unit ID** REQUIRED  
NON123456

**NJ Certification Number** REQUIRED  
NJ-999999-SUN-I-NMR-SREC-II

### Step 4

**NJ Certification Number**  
Each eligible solar facility is provided with NJ Certification Number on its NJCEP approval letter. This must begin with NJ-XXXXXX-SUN-I where X's are numeric, then is followed by the project type code, and followed by either a "-TREC" or "-SREC-II" suffix which determines the facility's program. View more information at [Solar Incentives NJ FAQs](#)

**GATS Unit ID**  
To receive a GATS Unit ID you must:  
1) Create an account at [www.pjm-eis.com](http://www.pjm-eis.com)  
2) Register your solar facility as a generator with GATS using the system's array details and NJ State Certification Number.

**Contact Us**

Tel	(877) 754-3149
Email	<a href="mailto:admin@solarincentivesnj.com">admin@solarincentivesnj.com</a>

# Application Portal



## Step 4 Interconnection Details

- Interconnecting Utility
  - Atlantic City Electric (ACE)
  - Jersey Central Power & Light
  - PSE&G
  - Rockland Electric
  - Municipal/Electric Coop
- PJM GATS Unit ID
  - NON or MSET number
- NJ Certification Number
  - Must end with “-TREC” or “-SREC-II” in order to participate

### Project ~ Solar Incentive NJ

Step 1 Step 2 Step 3 **Step 4** Step 5

#### Interconnection Details

**Interconnecting Utility** REQUIRED

-- Specify One --

**PJM GATS Unit ID** REQUIRED

NON123456

**NJ Certification Number** REQUIRED

NJ-999999-SUN-I-NMR-SREC-II

#### Step 4

**NJ Certification Number**

Each eligible solar facility is provided with NJ Certification Number on its NJCEP approval letter. This must begin with NJ-XXXXXX-SUN-I where X's are numeric, then is followed by the project type code, and followed by either a "-TREC" or "-SREC-II" suffix which determines the facility's program. View more information at [Solar Incentives NJ FAQs](#)

**GATS Unit ID**

To receive a GATS Unit ID you must:

- 1) Create an account at [www.pjm-eis.com](http://www.pjm-eis.com)
- 2) Register your solar facility as a generator with GATS using the system's array details and NJ State Certification Number.

**Contact Us**

Tel	(877) 754-3149
Email	<a href="mailto:admin@solarincentivesnj.com">admin@solarincentivesnj.com</a>

**Save and Continue** **Exit**

**Oh dear, it looks like something is not quite right**

Please review the notes below and correct any errors before progressing

- This project's GATS Unit ID matches the Unit ID of an existing registered system. Please contact the Program Administrator if you believe you received this message in error.

# Application Portal



## Step 5

### Document Uploads & Program Attestation

- Photo of Voided Check
  - Information should match details provided in Step 3
- Schedule A
  - Required for aggregators only
  - GATS form where a generator signs over permission to manage the RECS from their account to another party
- Optional Uploads
- Comments
  - Any notes that might help the program administrator process your payments more efficiently

#### Document Uploads

The following filetypes are allowed: pdf, jpeg, jpg, png, gif, docx, doc

**Photo of Void Check** REQUIRED

No file chosen

**Schedule A** REQUIRED

No file chosen

**Optional Upload**

**Optional Document**

No file chosen

**Comments**

If you have any comments regarding your application, please enter them here.

#### Applicant Attestation

You must attest to the statements below, before submitting.

I, *Johnny Bananas*, certify that, to the best of my knowledge and belief, all information in the Solar Incentives NJ Application ID 15569 submitted to the Solar Incentives NJ Payments Portal ("Portal")<sup>1</sup> for NJ-999999-SUN-I-NMR-SREC-II is accurate and complete.

I, *Johnny Bananas*, certify that I am authorized to create and trade all Certificates associated with the solar facility in the PJM<sup>2</sup> Generation Attribute Tracking System ("GATS"). I have not granted similar authority or permission to any other entity and, by submitting this application, I do not have any contractual obligations that would preclude receipt of Renewable Energy Certificate ("REC") payments. I understand, acknowledge, and agree that the Portal has been established to reimburse the System Owner<sup>3</sup> or an Authorized Party<sup>4</sup>.

If the Program Administrator determines that the REC rights are not held by the entity listed as the System Owner or Authorized Party on the Portal application, the Program Administrator may attempt to collect any and all REC payments distributed to, or collected unlawfully, by any entity in the Portal.

<sup>1</sup>Payments within the New Jersey TREC Program and Successor Solar Incentive ("SuSI") are administered and managed by its Program Administrator, InClima Inc., at <https://solarincentivesnj.com/>. InClima, Inc. is tasked with initiating payments to all eligible systems in New Jersey on behalf of the Electric Distribution Companies ("EDCs"): Atlantic City Electric Company ("ACE"), Jersey Central Power & Light Company ("JCP&L"), Public Service Electric and Gas Company ("PSE&G") and Rockland Electric Company ("RECO").

<sup>2</sup>PJM is the abbreviation for the Pennsylvania-New Jersey-Maryland Interconnection.

<sup>3</sup>System Owner, herein, refers to the entity listed in Step 2 of the Portal Program Application under the heading "System Owner Information."

<sup>4</sup>Authorized Party, herein, refers to an aggregator, broker, financial institution, or some other entity granted REC trading rights by a System Owner.

I attest that the statements above are true and correct  
January 24, 2022, 8:07 PM

# Application Portal



## Project Dashboard

- The portal allows REC aggregators, solar developers, and system owners to manage payments in one place
- Emails are sent as a project moves through the pipeline to a final status of Registered
  - If additional info is needed, users will receive a “Need Info” request and the outstanding items will be listed in the “Information Needed” column

### Project Dashboard

[Begin New Project Application](#)

#### Project Applications

Show 10

App ID	Project	Project Status	Information Needed
91	<a href="#">CSV Test Owner Changed</a>	Need Info	Please provide completed GATS Change in Ownership form.
23	<a href="#">Standing Order Test 2</a>	Pending Standing Order	
90	<a href="#">CSV Test Aggregator</a>	Registered	
89	<a href="#">CSV Test Auto Submit</a>	Registered	
20	<a href="#">Test5</a>	Registered	
6	<a href="#">Gary Test</a>	Registered	
2	<a href="#">Berkley</a>	Registered	
114	<a href="#">yo</a>	<div style="background-color: #ccc; width: 60%;"><div style="background-color: #777; width: 60%;"></div></div> 60% Step 4 of 5 <a href="#">Continue &gt;</a>	
92	<a href="#">CSV Test Prevent Auto Submit</a>	<div style="background-color: #ccc; width: 75%;"><div style="background-color: #777; width: 75%;"></div></div> 75% Step 5 of 5 <a href="#">Continue &gt;</a>	
41	<a href="#">Help text</a>	Submitted	

Showing 1 to 10 of 10 entries

Search A Search Project Search Status Search Information N

Previous 1 Next

# Application Portal



## Payments Dashboard

- Users can also monitor payment history for all registered systems
- Emails are sent once a certificate is invoiced to the utilities and once payment is initiated

### Payment Dashboard

[Update Bank Account Information](#)

#### Registered Projects

Show

App ID	Project	Total TRECs Received	Total TRECs Paid	View Payment History	Download Payment History
5593	<a href="#">Aggregator Test</a>	78	78	<a href="#">View</a>	<a href="#">Download</a>
5590	<a href="#">Bank Error Test</a>	1		<a href="#">View</a>	<a href="#">Download</a>

Showing 1 to 2 of 2 entries Previous  Next

#### Reports

Start Date:  End Date:  [Leave blank for ALL]

[Download Payment History for All Systems](#)

# Application Portal



## Payment History

### Payment History - Application 5593

Inv #	Serial Number	Generation Month	Status ?	Qty	Total Payment	Date Received	Est Payment Date	Date Paid
10	9999999 - 1 to 78	2020-05-01	Payment Successful	78	10,077.60	2021-04-14	2021-05-29	2021-04-14

### Payment History - Application 5590

Inv #	Serial Number	Generation Month	Status	Qty	Total Payment	Date Received	Est Payment Date	Date Paid
	9999999 - 1 to 1	2020-05-01	Received	1	129.20	2021-04-12	2021-06-17	

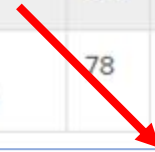
# Application Portal



## Payment History

### Payment History - Application 5593

Inv #	Serial Number	Generation Month	Status ?	Qty	Total Payment	Date Received	Est Payment Date	Date Paid
10	9999999 - 1 to 78	2020-05-01	Payment Successful	78	1			



### Payment History - Application 5590

Inv #	Serial Number	Generation Month	Status	Qty	Total Payment
	9999999 - 1 to 1	2020-05-01	Received	1	12

Certificate Status	Description
<b>Received</b>	Certificate received by the Program Administrator (PA) and will be invoiced on the first business day of the next month.
<b>Pending Payment</b>	Certificate invoiced to utilities for approval. This process takes 35 days. The <b>Est Payment Date</b> provided reflects when you can expect to receive a successful payment in your bank account.
<b>Payment Successful</b>	Certificate approved and payment sent by the Program Administrator (PA). The <b>Date Paid</b> provided reflects the date payment was initiated. Please allow 10 days for payment to be reflected in your account.
<b>Bank Error</b>	Bank error received during certificate payment attempt. To receive payment, click here: <a href="#">Update Bank Account Information</a> <b>If you need assistance or have questions, please contact the Program Administrator.</b>




# Aggregators

- Third parties acting on behalf of multiple facilities should officially register as an aggregator in the portal to turn on some additional features.
- [Schedule A](#) required for each facility you are managing on behalf of a customer
- CSV Uploads
  - Allows Aggregators to upload a .csv file with all details within the five-step application instead of manually entering and clicking through
  - If submitting as an owner, you can auto submit.
  - If submitting as an Aggregator, you must upload the Schedule A as well so cannot auto submit. This is also true for any projects that have had a change in ownership since NJCEP approval
- **Default Bank Account**
  - You can choose to have all applications created under your account to default to one company bank account
  - This needs to be turned on for you to be able to utilize the CSV upload functionality




# Aggregators Dashboard

 **SOLAR INCENTIVES NJ** INFORMATION PROJECTS PAYMENTS **AGGREGATORS**

## Aggregator Dashboard

InClime is currently registered as an Aggregator.

As an Aggregator, you are eligible to set up a Bank Account and denote it as the Default Bank Account for your Project Applications.

[Create Account](#) 

## Aggregator Dashboard

**Aggregator: InClime**  
Bank Account Status: Account Verified

**Default to Aggregator Bank Account in all future Project Applications?**

Your Aggregator Bank Account **IS NOT** set as the default account for future Project Applications

[Switch to Default to Aggregator Account](#)

### Bank Account Information

**Bank Name**

**Account Holder Name**

**Account Type**

**Account Number**

**Routing Number**

[Update Account](#)

# TREC Payments



- TREC payments are calculated based on the base price, the system’s Project Type, and the number of RECs transferred from GATS
- You can identify your Project Type and as a result your TREC Factor by the letters preceding the “-TREC” ending within your NJ Certification Number
- For example, if you have 1 REC transferred from GATS:
  - Grid supply rooftop (GSR) will receive \$152.00 = 1 REC x \$152 x **1.0**
  - Community solar (CS) will receive \$129.20 = 1 REC x \$152 x **0.85**
  - Residential rooftop (NMRRRC) will receive \$91.20 = 1 REC x \$152 x **0.60**

Project Type	TREC Base Price	TREC Factor	Effective Price	NJ Certification Number
Subsection (t): landfill, brownfield, areas of historic fill	\$152	1	\$152.00	NJ-XXXXXX-SUN-I-LBH-TREC
Grid supply (subsection (r)) rooftop	\$152	1	\$152.00	NJ-XXXXXX-SUN-I-GSR-TREC
Net-metered non-residential rooftop and canopy	\$152	1	\$152.00	NJ-XXXXXX-SUN-I-NMNRRC-TREC
Community Solar	\$152	0.85	\$129.20	NJ-XXXXXX-SUN-I-CS-TREC
Grid supply (subsection (r)) ground mount	\$152	0.6	\$91.20	NJ-XXXXXX-SUN-I-GSGM-TREC
Net-metered residential ground mount	\$152	0.6	\$91.20	NJ-XXXXXX-SUN-I-NMRG-TREC
Net-metered residential rooftop and canopy	\$152	0.6	\$91.20	NJ-XXXXXX-SUN-I-NMRRRC-TREC
Net-metered non-residential ground mount	\$152	0.6	\$91.20	NJ-XXXXXX-SUN-I-NMNRG-TREC
Floating solar panels	\$152	0.6	\$91.20	NJ-XXXXXX-SUN-I-FLT-TREC

# SREC-II Payments



Market Segment	Size MW dc	NJ Certification Number	SREC-II Price
Net Metered Residential	All Types and Sizes	NJ-XXXXXX-SUN-I-NMR-SREC-II	\$ 90.00
Small Net-Metered Non-Residential located on Rooftop, Carport, Canopy and Floating Solar	Smaller than 1 MW	NJ-XXXXXX-SUN-I-NMNRSCF-SREC-II	\$ 100.00
Small Net-Metered Non-Residential located on Rooftop, Carport, Canopy and Floating Solar-PUBLIC	Smaller than 1 MW	NJ-XXXXXX-SUN-I-NMNRSCF-P-SREC-II	\$ 120.00
Large Net-Metered Non-Residential located on Rooftop, Carport, Canopy and Floating Solar	1 MW to 5 MW	NJ-XXXXXX-SUN-I-NMNLRCF-SREC-II	\$ 90.00
Large Net-Metered Non-Residential located on Rooftop, Carport, Canopy and Floating Solar-PUBLIC	1 MW to 5 MW	NJ-XXXXXX-SUN-I-NMNLRCF-P-SREC-II	\$ 110.00
Small Net Metered Non-Residential Ground Mount	Smaller than 1 MW	NJ-XXXXXX-SUN-I-NMNRSG-SREC-II	\$ 85.00
Small Net Metered Non-Residential Ground Mount-PUBLIC	Smaller than 1 MW	NJ-XXXXXX-SUN-I-NMNRSG-P-SREC-II	\$ 105.00
Large Net Metered Non-Residential Ground Mount	1 MW to 5 MW	NJ-XXXXXX-SUN-I-NMNLG-SREC-II	\$ 80.00
Large Net Metered Non-Residential Ground Mount-PUBLIC	1 MW to 5 MW	NJ-XXXXXX-SUN-I-NMNLG-P-SREC-II	\$ 100.00
LMI Community Solar	UP to 5 MW	NJ-XXXXXX-SUN-I-CSLMI-SREC-II	\$ 90.00
Non-LMI Community Solar	Up to 5 MW	NJ-XXXXXX-SUN-I-CSNLMI-SREC-II	\$ 70.00
Interim Subsection (t) Grid	All Types and Sizes	NJ-XXXXXX-SUN-I-LBH-SREC-II	\$ 100.00

- SREC-II payments are calculated based on the system’s Project Type and the number of RECs transferred from GATS. There is no Base Price
- You can identify your Project Type ably the letters preceding the “-SREC-II” ending within your NJ Certification Number.



# GATS Management

- **Standing Orders**

- All standing order sent to the program must contain the following:

- **Plant ( Fuel Type )** Facility's Unit ID (i.e. NON123456)
- **Account Holder** Solar Incentives NJ Program
- **Percent** 100%
- **From** Month System Went online (or 08/2021)
- **To** 15 years from Interconnection Month
- **Notes** Blank
- **Irrevocable** YES

- This should be automatically created at the time the facility is registered as a generator with GATS.
- If a standing order is submitted and no associated payment application is received, we will reject the standing order in GATS.
- If a standing order is Pending in GATS for an extended period (1 week +) and you did submit an associated payment app, please contact our team.

- **Reporting Meter Readings**

- Do NOT report meter readings until the associated payment application and standing order have been approved!
- Meter readings reported only (i.e. lifetime production)
- Customer Resource: [GATS Solution Aid – Reporting Generation Data Manually](#)
- Customers should be directed to speak with GATS admin staff if they have questions about how to report appropriately

- **Eligible Certificates**

- Must have “-TREC” or “SREC-II” designation associated with the certificate batch as well so if “NJ State Number” field in GATS is blank this means the certificate(s) is either from a month prior to the facility’s interconnection approval date or start of the program (May 2020 for TREC, Aug 2021 for SREC-II)

- **Certificates Generated Prior to Registration**

- These will need to be manually transferred to our GATS account
- Announcement addressing this with instructions are here:
  - <https://solarincentivesnj.com/certificates-generated-prior-to-standing-order-announcement/>

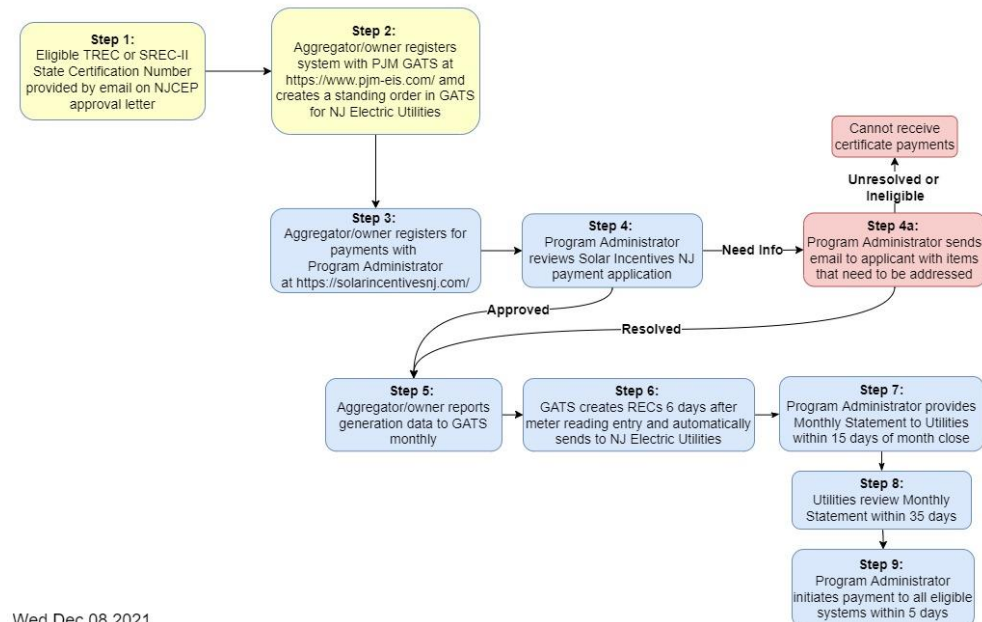


# Payments & Customer FAQs

- Payments are direct deposit only
- Payments Timeline Example
  - Meter reading entered for prior month (March) on **April 1<sup>st</sup> to April 15<sup>th</sup>**
  - Certificates created in GATS between **April 7<sup>th</sup> and April 22<sup>nd</sup>**
  - Certificates received in the GATS account during the month of April are invoiced to the utilities on **May 3<sup>rd</sup>** (first business day of the month)
  - Payment initiated for April certificates on **June 7<sup>th</sup> or 8<sup>th</sup>** (35 days after invoiced date)

## Solar Incentives NJ Portal: Transition Renewable Energy Certificate (TRECs) and Successor Solar Incentive (SuSI) Payments

### System Registration & Program Administrator Payment Process





# Payments & Customer FAQs

## *“When will I get my first payment?”*

- Certificates received after the first business day of the month will be included in the next month’s invoice to the utilities.
- **Worst case scenario:** Certificates are received the day after the first business day (or after the invoice has been issued that day) which may result in first payment not being received for approx. two months.
  - For example, a certificate received on April 2<sup>nd</sup> would be paid by June 15<sup>th</sup> (see below)
- Once received, an Estimated Payment Date is displayed in the Payment History view.
- Once included in an invoice, the “Certificates Invoiced” email provides the Estimated Payment Date.

## *“I registered more than two months ago. Why haven’t I received a payment?”* The answer could be ...

1. Previously created RECs were not manually transferred over to us
2. The customer has not started entering meter readings yet
3. The facility has not generated 1 MWh of solar production yet
4. The customer registered with GATS but not in the payments portal

## *“What do I need to complete the Solar Incentives NJ Program Payment Application?”*

- Location & Owner Details
- Bank Details
- GATS Unit ID & NJ State Cert #
- Copy of Voided Check (if applicable)



Questions?



# Thank you!

## Resources

Website

<https://solarincentivesnj.com/>

Steps to Register for Payments

<https://solarincentivesnj.com/successor/>

FAQs

<https://solarincentivesnj.com/faq/>

Resources

<https://solarincentivesnj.com/resources/>

## Contact Information

(877) 754-3149 | [admin@solarincentivesnj.com](mailto:admin@solarincentivesnj.com)



# Required Document for Aggregators

## Scheduled A Example

Aggregators need to have a signed [Schedule A](#) agreement authorizing them with rights to register the system.

**pjm | EIS**  
Environmental Information Services

**SCHEDULE A**  
**Generator Owner's Consent**

The undersigned on behalf of the Generator Owner, \_\_\_\_\_,<sup>1</sup> represents to PJM Environmental Information Services, Inc. ("EIS") that:

- I/we am/are the Generator Owner who holds legal title to the Generating Unit(s) designated below.
- I/we, the Generator Owner, (check one)
  - Hereby grant authority and permission to Account Holder, \_\_\_\_\_,<sup>2</sup> to create and trade all Certificates associated with the following Generating Unit(s), which Certificates shall also be registered to the GATS account(s) of the Account Holder.
  - Hereby elect to create and trade all Certificates associated with the following Generating Unit(s) within my own GATS account.
- I/we, the Generator Owner, further represent that I/we have not granted similar authority or permission to any other subscriber or account holder for use in the GATS or any similar system.
- I/we, the Generator Owner, understand that this Consent supersedes any and all Consents that have been submitted prior to the Date specified herein. Any and all prior Consents will be considered null and void and the assignment of rights terminated.
- The assignment of rights that occurs within this Consent does not absolve the Generator Owner from upholding any contractual obligations that exist outside of GATS.
- By executing this Consent the Generation Owner represents it does not have any contractual obligations that would preclude the execution of this Consent.

Generating Unit Name and Address Optional: [Generating Unit Size/System Size]	PJM MSET ID or EIA Plant Code and Generator Identifier (as applicable)

GENERATOR OWNER<sup>3</sup>

Name: \_\_\_\_\_

Title: \_\_\_\_\_

Date: \_\_\_\_\_